



GENERAL DATA

Request #00148586

File: W-G_DST_LIGHT_EN_COMPRESSED_SI#148586

Section



PDF-Datasheet

W_MI_30_30_63B14_MI_INOIL_STD_TypSTM_N-----

A.1.10.10 Customer references

FARM	Company	STM Finland
NAME_CUST	Customer contact person	Mikko Valtonen
ADDRESS_CUST	Address	Luoteisrinne 5 - 02270 Espoo (Finland)

A.2.10.10 Product Family

M_MASTER	Machine_MASTER	STM_STDL_STC_W-G
----------	----------------	------------------

A.2.10.20 Family Features

G_CHR_A	Feature No.1	Import universal Worm gearboxes and gear motors W
---------	--------------	---

A.3.10.10 Gearbox coding parameters - BASIC

M	Machine	W
TYPCON	Connection type	MI
SIZE	Size	30
OV	Output Version	- = feet design / flange design
MV	Mounting Version	- = Requirement not applicable
OF	Output flange	- = Requirement not applicable
IR	Reduction ratio	30
IECT	IEC type and Input Shaft	- = Direct coupling
IV	Input Version	IEC = IEC - Motor Type
IS	Input shaft	63B14
BE	Input double extension	- = no double extension
TOBE	Tapered Output Bearings	- = Output Radial Ball Bearing
LOV	Limiter Version	- = Standard shaft - without Limiter
LOM	Limiter motion output side	- = Standard shaft - without Limiter
LHC	Limiter oversize calibration	- = Without HEAVY Calibration
LSOS	Limiter supply status	- = If not specified in detail the limiter is supplied without calibration
TYPSPD	Output shaft type	- = mm
SD	Shaft Diameter	14
MPOF	Output Flange Side	- = Version with gearbox connection without flange
MP	Mounting positions	M1

A.3.20.10 ACC1 - Accessories - Output End

ACC1	ACC1 - Accessories - Output End	Without Option
------	---------------------------------	----------------



All contents, drawings and information in this document are sole property of STM S.p.A.
It cannot be disclosed for purposes other than under the agreement between the Customer and an authorized STM representative.
It cannot be reproduced (in whole or in part) without explicit written permission by STM S.p.A. legal representative, and in this case the intellectual property of the document remains solely of STM S.p.A.
This PDF-Datasheet cancels and replace any previous edition and revision.
We reserve the right to implement modifications without notice.

Date: 14/01/2021
Page A 1 of 6
Legal warnings: [LW-2D3D-Stmstar.pdf](#)
Email: stm@stm spa.com
Website: www.stm spa.com



PDF-Datasheet



GENERAL DATA

Request #00148586

File: W-G_DST_LIGHT_EN_COMPRESSED_SI#148586

Section



W_MI_30_30_63B14_MI_INOIL_STD_TypSTM_N_-----

ACC1POSDXSX ACC1 - Position RH - LH -

ACC1POSPROT_C ACC1 - Position PROT_C. -

A.3.20.30 ACC3 - Accessories - Shaft Mounted Versions

ACC3POSDXSX ACC3 - Position RH - LH -

ACC3POSBR ACC3 - Position BR. -

A.3.30.10 OPT - Options - Material of sealing rings

OPT OPT - Options - Material of sealing rings -

A.3.30.20 OPT1 - Options - Lubricant supply status and lubricant technical specifications

OPT1 OPT1 - Options - Oil supply status INOIL_STD = Gearbox with lubricant STM standard

A.3.30.30 OPT2 - Options - Painting

OPT2 OPT2 - Options - Painting TypSTM = Painting and surface protection - Standard STM

A.3.41.10 MOTOR GEARBOXES

MGBCK Gear motors - YES/NO N



All contents, drawings and information in this document are sole property of STM S.p.A. It cannot be disclosed for purposes other than under the agreement between the Customer and an authorized STM representative. It cannot be reproduced (in whole or in part) without explicit written permission by STM S.p.A. legal representative, and in this case the intellectual property of the document remains solely of STM S.p.A. This PDF-Datasheet cancels and replace any previous edition and revision. We reserve the right to implement modifications without notice.

Date: 14/01/2021
Page A 2 of 6
Legal warnings: [LW-2D3D-Stmstar.pdf](#)
Email: stm@stm spa.com
Website: www.stm spa.com



PRODUCT DATA SHEET

Request #00148586

File: W-G_DST_LIGHT_EN_COMPRESSED_SI#148586

Section



PDF-Datasheet

W_MI_30_30_63B14_MI_INOIL_STD_TypSTM_N_-----

C.1.10.30 Gearbox - Basic plate data

n1	Input shaft speed	1400	[rpm]
n2	Output shaft speed	46.7	[rpm]
ir_gear	Transmission ratio	30	[Numeric]
TN	Gearbox Nominal Output Torque	20	[Nm]
P1n	Nominal Input Mechanical Power	0.15	[kW]
RD%	Dynamic efficiency	65	[Numeric]
Fr(I/2) n1	Input Nominal Radial Load for Gearbox at I/2 distance	210	[N]
Fr(I/2) n2	Output Nominal Radial Load for Gearbox at I/2 distance	1085	[N]
Fa n1	Input Nominal Axial Load	42	[N]
Fa n2	Output Nominal Axial Load	217	[N]
Ptn	Thermal Power Rating	0.32	[kW]



All contents, drawings and information in this document are sole property of STM S.p.A.
 It cannot be disclosed for purposes other than under the agreement between the Customer and an authorized STM representative.
 It cannot be reproduced (in whole or in part) without explicit written permission by STM S.p.A. legal representative, and in this case the intellectual property of the document remains solely of STM S.p.A.
 This PDF-Datasheet cancels and replace any previous edition and revision.
 We reserve the right to implement modifications without notice.

Date: 14/01/2021
 Page C 3 of 6
 Legal warnings: [LW-2D3D-Stmstar.pdf](#)
 Email: stm@stm spa.com
 Website: www.stm spa.com



PDF-Datasheet

Dimensioni Dimensions Abmessungen

Section:

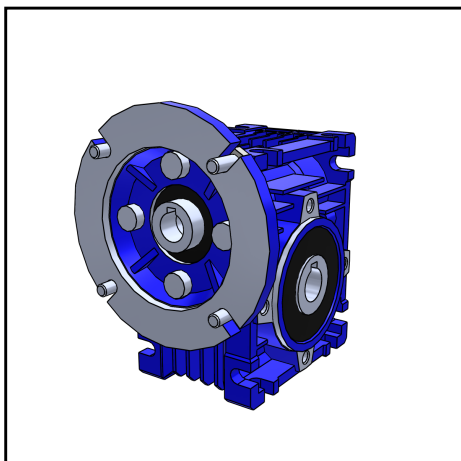
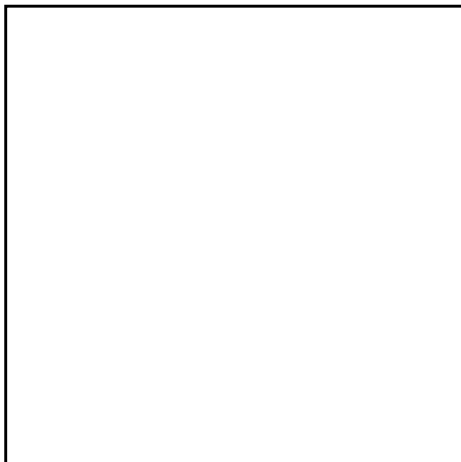
E

Designation

W_MI_30_30_63B14_M1_INOIL_STD_TypSTM_N-----

E.0

Designation gearbox:



M (Machine)	W
TYPCON (Type Connection)	MI = pre arrangement motor
SIZE (Size)	30
OV (Output Version)	- = feet design / flange design
MV (Mounting Version)	- = Requirement not applicable
OF (Output Flange)	- = Requirement not applicable
IR (Reduction ratio)	30
IECT (IEC type and input shaft)	- = Direct coupling
IV (Input Version)	IEC = IEC - Motor Type
IS (Input shaft)	63B14
BE (Input double extension)	- = no double extension
TOBE (Tapered Output Bearings)	- = Output Radial Ball Bearing
LOV (Limiter Output Version)	- = Standard shaft - without Limiter
LOM (Limiter Output Motion)	- = Standard shaft - without Limiter
LHC (Limiter HEAVY Calibration)	- = Without HEAVY Calibration
LSOS (Limiter-Scope of the supply)	- = If not specified in detail the limiter is supplied without calibration
TYPSPD (Typ output shaft)	- = mm
SD (Shaft Diameter / mm)	14
MPOF (Mounting Position Output Flange)	- = Version with gearbox connection without flange
MP (Mounting positions)	M1
ACC1 (ACC1 - Accessories - Output Configuration)	Without Option
ACC1POSDXSX (ACC1 - Position DX - SX)	-
ACC1POSPROT (ACC1 - Position PROT_C.)	-
ACC3POSDXSX (ACC3 - Position DX - SX)	-
ACC3POSPROT (ACC3 - Position PROT_C.)	-
OPT (OPT - Options - Materials of Seals)	-
OPT1 (OPT1 - Options - Scope of the supply - Options - OIL)	INOIL_STD = Gearbox with lubricant STM standard
OPT2 (OPT2 - Options - Painting and surface protection)	TypSTM = Painting and surface protection - Standard STM
MGBCK (Motor gearboxes - YES/NO)	N = NO - Motor gearboxes
MAR (Marking)	-
MGB (Motor gearboxes)	-
IN (Options inverter)	-
BF (Options balanced winding)	-
POL (Pole n.)	-
TOW (Type of winding)	-
SIZEM (Motor size)	-
LEN (Length)	-
DV (Design version)	-
PMT (Position Terminal Box)	-
AVC (Available configurations)	-
SDM (Motor shaft diameter)	-
F (Flange)	-
HB14 (n° holes flange b14)	-
IP (Protection level)	-
PLATE (Plate)	-
POW (Power)	-
CEP1 (cable entry 1 position motor)	-



All contents, drawings and information in this document are sole property of STM S.p.A.
It cannot be disclosed for purposes other than under the agreement between the Customer and an authorized STM representative.
It cannot be reproduced (in whole or in part) without explicit written permission by STM S.p.A. legal representative,
and in this case the intellectual property of the document remains solely of STM S.p.A.
This PDF-Datasheet cancels and replace any previous edition and revision.
We reserve the right to implement modifications without notice.

Date: 14.01.2021
Page: E 1

Legal warnings: LW-2D3D-Stmstar.pdf
Email: info@stm.com
WebSite: <http://www.stmspa.com>



PDF-Datasheet

Dimensioni Dimensions Abmessungen

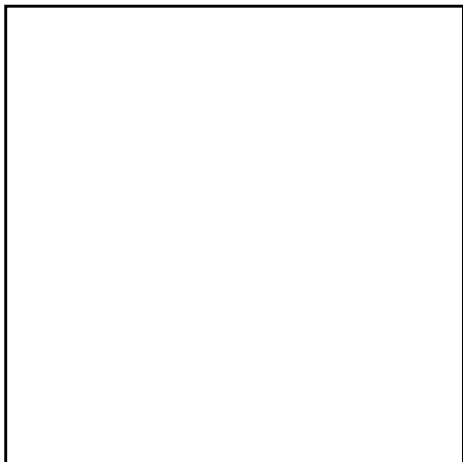
Section:

E

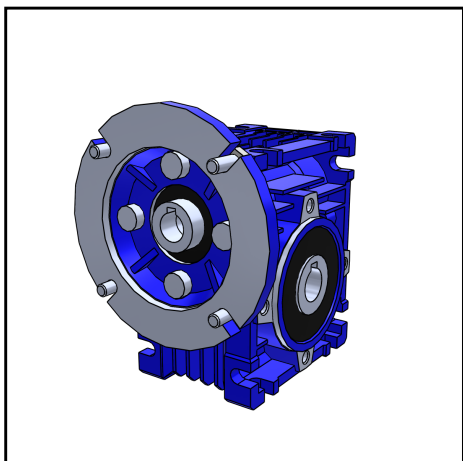
Designation W_MI_30_30_63B14_M1_INOIL_STD_TypSTM_N_-----

E.0

Designation gearbox:



CEP2 (cable entry 2 position motor)	-
TOD (Type of duty)	-
TOB (Type of brake)	-
RLP (Release lever position)	-
IPF (Protection level brake)	-
DES (Double ended shaft)	-
PC (Cooling)	-
SAVE (Separate power servoventilation)	-
VSAVE (External power supply fan)	-
PSAVE (Separate fan terminal position)	-
CEPV (cable entry position servoventilation)	-
RS (Rain shield)	-
CEPT (Thermal cable entry position)	-
PA (Painting)	-



All contents, drawings and information in this document are sole property of STM S.p.A.
It cannot be disclosed for purposes other than under the agreement between the Customer and an authorized STM representative.
It cannot be reproduced (in whole or in part) without explicit written permission by STM S.p.A. legal representative,
and in this case the intellectual property of the document remains solely of STM S.p.A.
This PDF-Datasheet cancels and replace any previous edition and revision.
We reserve the right to implement modifications without notice.

Date: 14.01.2021

Page: E 2

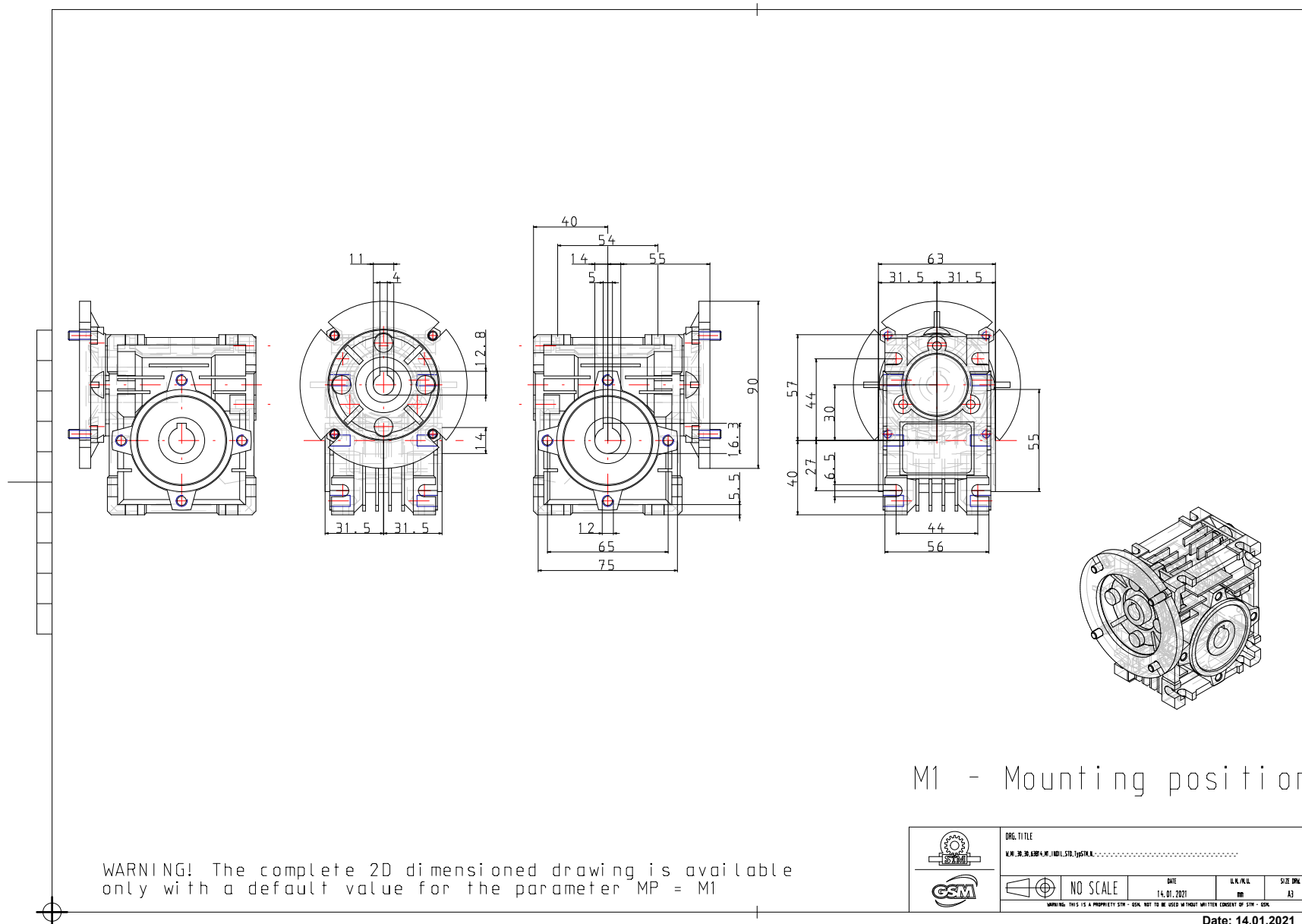
Legal warnings: LW-2D3D-Stmstar.pdf
Email: info@stm.com
WebSite: <http://www.stmspa.com>

Designation

W_MI_30_30_63B14_M1_INOIL_STD_TypSTM_N - - - - -

E.1

General Dimension 2D:



Date: 14.01.2021

Page: E 3