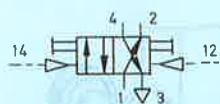


## Double pilot valve with manual override

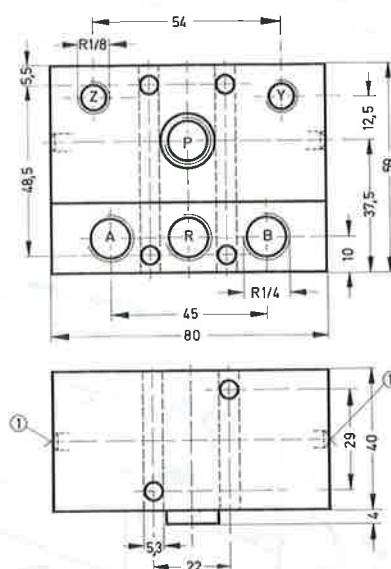
### Type JP-4-1/4



The valve is reversed by means of alternating pneumatic signals to ports 14 and 12. The switching position is retained after the signal is removed, until a counter-signal is received.

The valve can also be used as a 3/2-way valve by blanking off port 4 or 2.

Accessory:  
Plug G 1/4  
Order code 3569 B-1/4

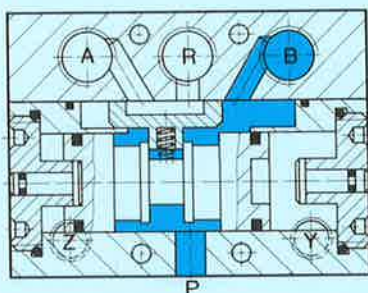


① Manual override

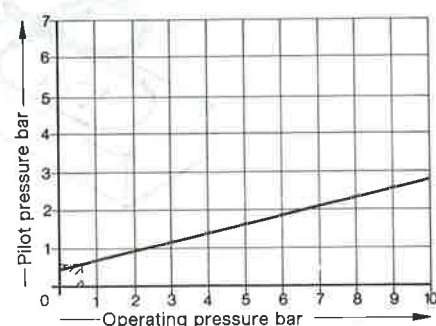


- 1 (P) = Supply port
- 4, 2 (A, B) = Working or outlet lines
- 3 (R) = Exhaust (or vacuum)
- 12, 14 (Y, Z) = Pilot lines

Manifold for manifold mounting, see sheet 2.928.



### Minimum pilot pressure as a function of operating pressure



Note:  
Within the shaded square, the pilot pressure required is higher than the operating pressure.

Order code	Part No./Type	2141 JP-4-1/4
Medium		Compressed air, filtered (lubricated or unlubricated) or vacuum*
Design		Flat slide valve
Mounting		Through-holes in housing
Connection	Working lines	G 1/4
	Pilot lines	G 1/8
Nominal size		6.5 mm
Standard nominal flow rate (P→A)		920 l/min
Operating pressure range		0 to 10 bar
Pilot pressure range		See graph
Response time at 6 bar		8 ms
Temperature range		-10 to +60 °C
Materials		Housing: hard anodized aluminium; seals: perbunan
Weight		0.495 kg

\* Vacuum connected to R

Wearing parts kit

For type	JP-4-1/4
Order code	104 196

