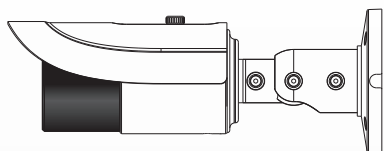


# Network Camera Quick Start Guide



## 1. Introduction

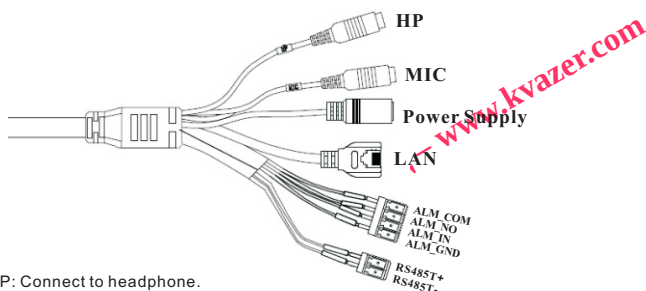
After you receive the device, please check the following accessories. All pictures are only for reference. Please take the material object as standard.

Camera	Quick Guide Start	CD	Cable	Screwdriver

This series of cameras include cost-down models and full-function models. The cost-down models don't support alarm in/out and RS485 connections as well as TF card inserting. Some models also cannot adjust focus. Please take the camera you get as standard. Here we take the full-function models for example to give a brief introduce in respect of the use of the camera.

## 2. Connections and Focusing

### • Connections of External Ports



HP: Connect to headphone.

MIC: Connect to microphone.

DC12V: Power supply.

LAN: Network port. It supports PoE power supply.

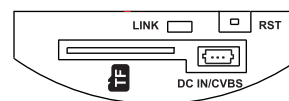
Alarm NO/COM: Alarm output. Connect to alarm output device.

Alarm GND: Connect to external sensor together with the alarm input line.

Alarm IN: Connect to alarm input device, like sensor.

RS485: Connect to keyboard or speed dome.

### • Connections of Internal Ports



You shall remove the sun shade and lens case if you want to use the above ports.

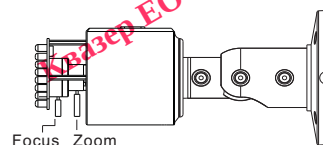
Link: Network indicator.

RST: Reset port. Hold and press the spring blade in this hole with spicule to reset the settings to the factory default settings.

TF: Insert TF card.

DC IN/CVBS: Connect to a 3 pin joint which has a power supply port and a CVBS port in the other end. You can connect to monitor for video adjustment.

### • Focus Adjustment



Step 1: You shall remove the sun shade and lens case first and then adjust focus as shown above.

Step 2: Loosen the screws of the lens for focusing. Then rotate the lens left or right to adjust.

Focus: Rotate the lens left or right to adjust the definition of the image.

Zoom: Rotate the lens left or right to zoom in or out the image.

## 4.IE Network Connection

User can connect IP-CAM through LAN or WAN. Here only take IE browser(6.0) for example. The details are as follows:

### 4.1 LAN

In LAN, there are two ways to access IP-CAM: 1. access through IP-Tool; 2. directly access through IE browser.

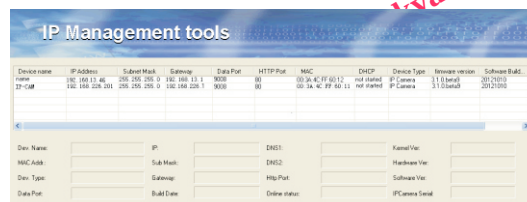
#### 4.1.1 Access through IP-Tool

##### Step 1:

Make sure the PC and IP-CAM are connected to the LAN and the IP-Tool is installed on the PC from the CD.

##### Step 2:

Use IP-Tool to modify the network of IP-CAM. Then double click the icon on the desktop to run this software as shown below:



IP-Tool will automatically search the device after starting it. If user cannot confirm which one is yours, please shut off the electricity of the IP-CAM and then power on it. When shutting off the power, the device information will disappear. When powering on, the device information will emerge. Well, the device is the used device. User can check the detail information of IP-CAM by clicking the address of the device.

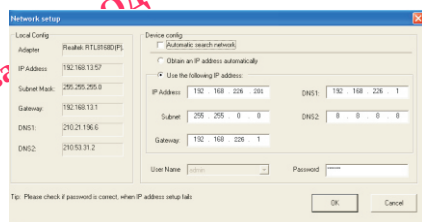
##### Step 3:

Double-click or right-click the IP address and select "browse with IE". Then the system will pop up the IE browser to connect IP-CAM. IE browser will auto download the Active X control. After finishing installing the Active X control, a login window will pop up as shown below:



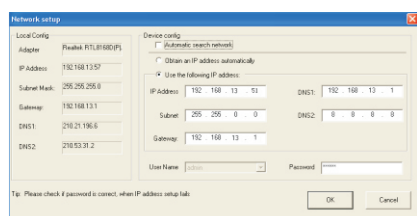
The default user name and password are "admin" and "123456" respectively.

You can also modify the IP address of the device by IP-Tool. Then input the modified IP address and port in the IE browser bar to access IP-CAM. Right click the device information in the device list of the IP-Tool to choose network configuration. This will bring up a window as shown below:



For example, the network segment of your computer is 192.168.13.X. Click "Use the following IP address" and then modify the IP address, gateway of the IP-CAM which must be in the same network segment with the computer's. Please modify the IP address of your device according to practical situation. After finishing, please input the user name and password. Click "OK" button to save the setting.

The default user name and password are "admin" and "123456" respectively.



#### 4.1.2 Directly access through IE

The default network settings are as shown below:

IP address: 192.168.226.201 HTTP:80  
Subnet Mask: 255.255.255.0 Data Port:9008  
Gateway: 192.168.226.1

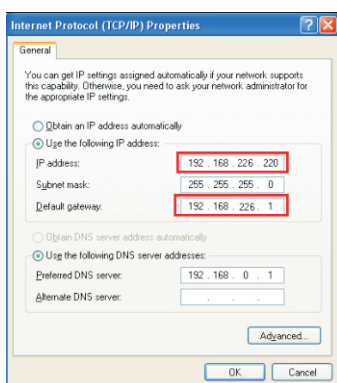
The first time you used the IP-Cam, you should connect the device with the above default settings.

##### Step 1:

Manually setup the IP address of the PC and the network segment should be as the same as the default settings of IP-CAM. Right click "My Network Places" icon on the desktop. Select "Properties" as shown in the left figure. Right click "Local Area Connection" at the popup window, and then select "Property" as shown in the right figure.



Select "Internet Protocol(TCP/IP)" in the "General" tabs. Click "Properties" and input network address information of the PC in the popup window.



##### Step 2:

Open the IE Browser and input the default address of IP-CAM and confirm. The IE browser will download Active X control automatically.

##### Step 3:

After downloading Active X control, the login dialog box will pop up.

##### Step 4:

Input user name and password. Click "OK" button to enter into the live interface.

## 4.2 WAN

### Access through the router or virtual server

##### Step1:

Connecting according to above steps in LAN; Enter into the System Config→Network Config→Port to set up the port number

##### Step 2:

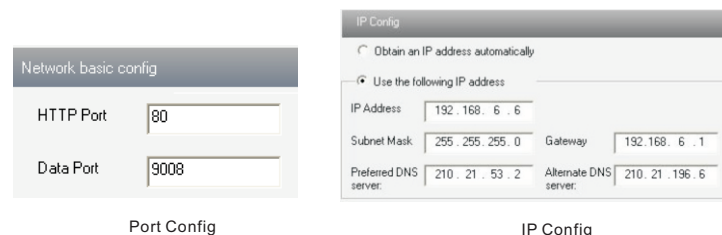
Enter into System Config→Network Config→Wired to modify the IP address

##### Step 3:

Enter into the router's management interface through IE browser to forward the IP address and port of IP-CAM in the "Virtual Server".

##### Step 4:

Open the IE browser and input its WAN IP and HTTP port to access the IP-CAM. The following steps are as same as step 3 and 4 of chapter 4.1.2.



Port Config

IP Config

Port Range					
Application	Start	End	Protocol	IP Address	Enable
1	9008	to 9008	Both	192.168.6.6	<input checked="" type="checkbox"/>
2	80	to 81	Both	192.168.6.6	<input checked="" type="checkbox"/>
3	10000	to 10001	Both	192.168.6.166	<input type="checkbox"/>
4	21000	to 21001	Both	192.168.6.156	<input type="checkbox"/>
5	7777	to 7778	Both	192.168.6.206	<input type="checkbox"/>
6	1029	to 1030	Both	192.168.6.207	<input type="checkbox"/>

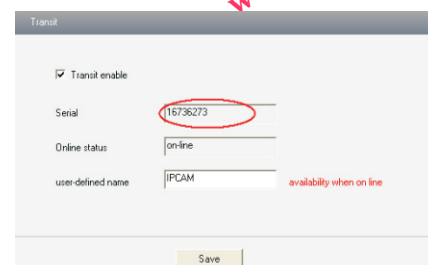
Router Config

## 5. NET Traversal Configuration

User can access to network without dynamic domain name and port forwarding by enabling net transit.

##### Step 1:

Enter into Config→Network Config→NET traversal Config. Check the "Transit enable". Then save the setting.



##### Step 2:

Input www.upnpipc.com in IE address bar, download and install Active X control. Then a login window pops up as shown below:



##### Step 3:

Input the only device ID of the IP-CAM(the serial number of the device), user name and password

The default user name and password are "admin" and "123456" respectively.