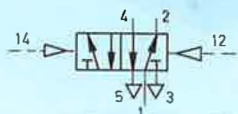


## Cassette valve

Double pilot valve  
without sub-base

Type CJ-5/2-1/4



The valve is actuated by means of alternating pilot signals to ports 14 and 12. The switching position is retained after the signal is removed, until a counter-signal is received.

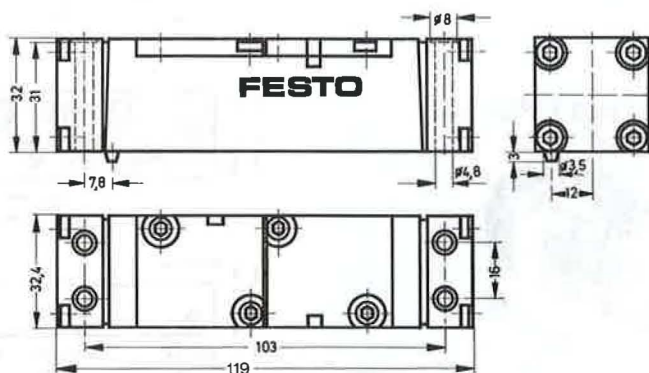
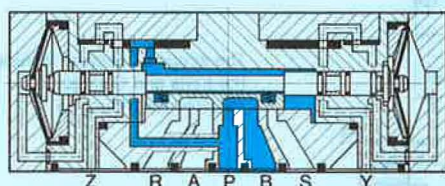
### Mounting possibilities:

This cassette valve can be mounted directly on all FESTO sub-bases (see next page).

The mounting screws (4 bolts, M5 x 55 DIN 84) are supplied with the valve.

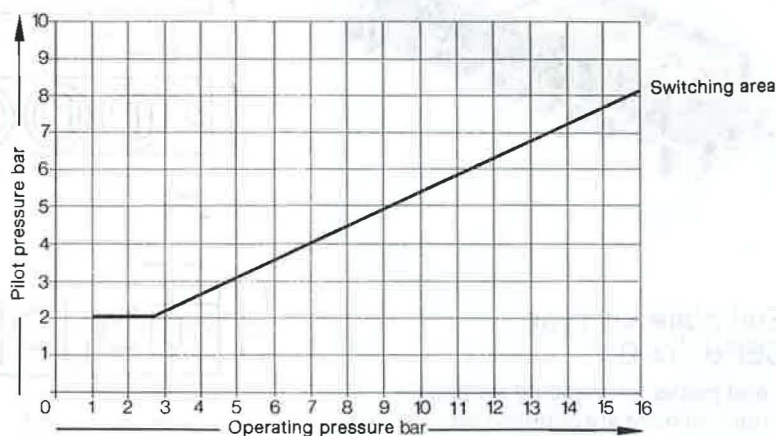
### Note:

Basic cassette valve, set of wearing parts and additional valve variants, see sheet 2.950.



- 1 (P) = Supply port
- 4, 2 (A, B) = Working or outlet lines
- 5, 3 (R, S) = Exhaust
- 12, 14 (Y, Z) = Pilot lines

Minimum pilot pressure as a function of operating pressure



Order code	Part No./Type	5736 CJ-5/2-1/4
Medium		Compressed air, filtered (lubricated or unlubricated)
Design		Flat slide valve with diaphragm control
Mounting		On sub-bases (see next page)
Connection	Working lines	G 1/4 (sub-base)
	Pilot lines	G 1/8 (sub-base)
Nominal size		6.5 mm
Standard nominal flow rate (1 → 4)		1140 l/min (basic valve)
Operating pressure range		1 to 16 bar
Pilot pressure range		2 to 10 bar (see graph)
Response time at 6 bar		19 ms
Ambient temperature		-5 to +40° C
Medium temperature		-10 to +60° C
Materials		Housing: aluminium casting; diaphragms: polyurethane; seals: perbunan
Weight		0.270 kg

Standard sub-bases as per CETOP and DIN (VDMA), see pages 2.950 and 2.952.

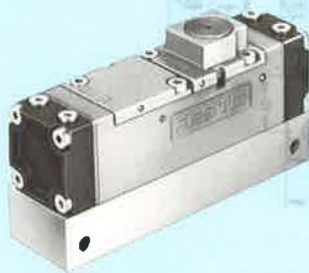
### Sub-base Type CAS-1/4

Ports at the side



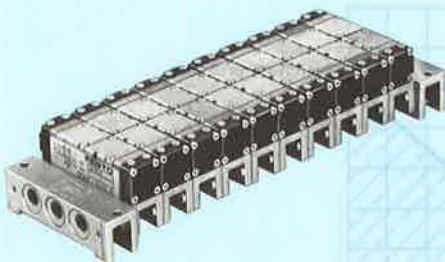
### Sub-base Type CAU-1/4

Ports underneath



### Sub-base Type CAB-1/4

for manifold mounting



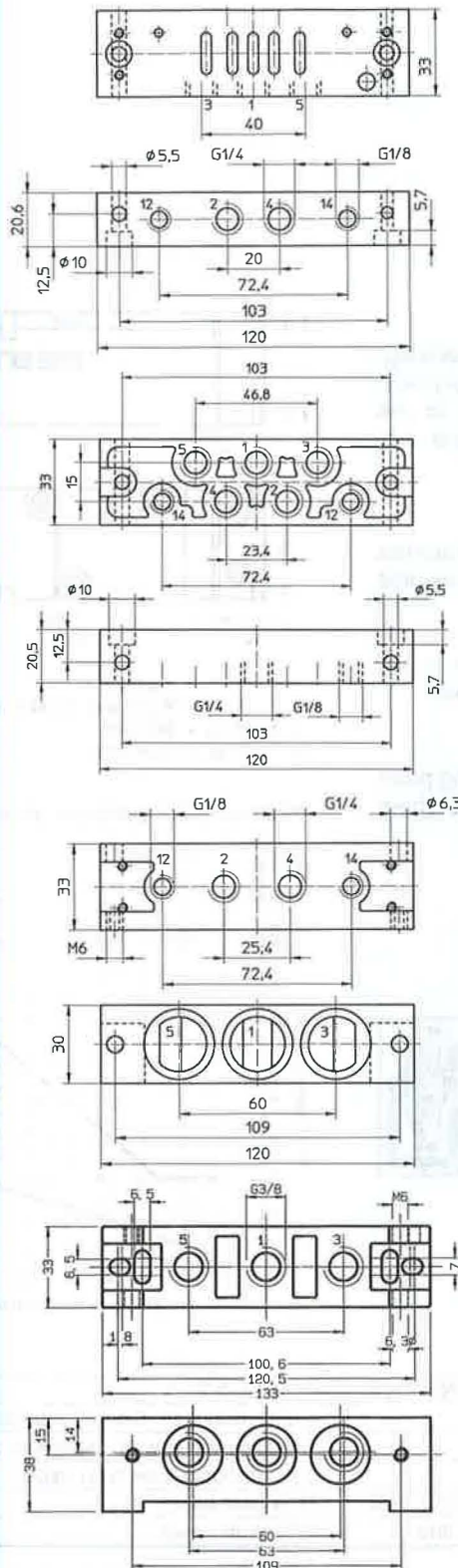
### End plate kit Type CEPB-1/4-B

2 end plates for manifold mounting  
Mounting bolts are supplied with the end plate.

### Isolating disc Type CSC-1/4

To seal the common lines P, R, and S,  
between the end plate and sub-base or  
between 2 sub-bases.

In comparison with standard sub-bases, FESTO sub-bases require considerably less space for fitting, thus enabling more valves per manifold.



CAS-1/4



- 1 (P) = Supply port
- 4, 2 (A, B) = Working or outlet lines
- 5, 3 (R, S) = Exhaust
- 12, 14 (Y, Z) = Pilot lines

CAU-1/4



CAB-1/4



The scope of delivery includes the bolts and O-rings required for mounting.

CEPB-1/4-B



Order code	Part No./Type	5830 CAS-1/4	5831 CAU-1/4	5829 CAB-1/4	10405 CEPB-1/4-B	5670 CSC-1/4
Mounting		Through-holes	Manifold mounting			
Connection	Working lines	G 1/4	G 1/4	G 1/4	G 3/8	—
	Pilot lines	G 1/8	G 1/8	G 1/8	—	—
Standard nominal flow rate with valve		750 l/min	750 l/min	—	—	—
Materials		Die-cast aluminium				Plastic
Weight		0.180 kg	0.120 kg	0.160 kg	0.510 kg	0.001 kg